



Door & Window Frames

Metal Frame Product



**STRONG AND
DURABLE**



**FAST & EASY
INSTALLATION**



**ENVIRONMENTAL
FRIENDLY**

DOOR & METAL FRAMES

Metal Frame Product

Ajiya is one of the pioneers since year 1990 in the manufacture and development of metal frame products. 15 rollforming lines, various ancillary machineries and fully staffed modern engineering workshop equipped with computer controlled (CNC) machineries capable of producing precision parts and tooling for in-house use.

WHY CHOOSE METAL FRAMES:

Metal door frames, specifically steel frames, are incredibly durable. It lasts longer, requires the fewest repairs, and is sturdier than other products like wood, aluminium, and fiberglass in demanding environments.

- Strong and Durable
- Safe against intruders
- Lightweight, fast & easy for installation
- Will not warp, shrink or twist
- Not susceptible to rot, insects or termites
- Shape can be customized with minimum wastage
- Environmentally friendly
- Economical & Easy maintenance

SPECIFICATIONS

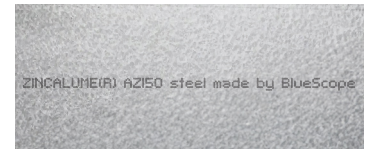
Material	**ZINCALUME® steel (AZ150), Aluzinc, Electro Galvanized, Galvanneal, Hot-dipped Plain Galvanized Steel	
Thickness	0.7mm, 0.8mm, 1.0mm, 1.2mm and 1.5mm	
Profile	1. WA Series 2. Single Rebate Series (SR) 3. Single Rebate (E) Series (SRE) 4. Single Rebate (WA) Series (SRWA) 5. Single Rebate Groove Line Series (SRGL) 6. Double Rebate Series (DR)	7. Double Rebate (E) Series (DRE) 8. Double Rebate Groove Line Series (DRGL) 9. FR Single Rebate Series (FRSR) 10. FR Single Rebate Groove Line Series (FRSRGL) 11. FR Double Rebate Series (FRDR) 12. FR Double Rebate Groove Line Series (FRDRGL)
Hardware	METAL DOOR FRAME <ul style="list-style-type: none"> • Plated Hinges type [G.I & SUS] • Metal Striker plate for standard cylindrical lock type come with cover • Adapter – for connecting to columns or RC Wall • Flat Ties for bricks wall interlocking 	METAL WINDOW FRAME <ul style="list-style-type: none"> • All Mullion and Divider consists of RHS (34mm x 30/50/80mm) and 1 and half profile join frame • Safety Bar mild steel solid bar (diameter 12mm/16mm) • Safety Bar galvanized round pipe (diameter 16mm) • Glass Holder (Fixed Louvers only) * additional cost will be incur for special lookset

SUPERIOR QUALITY

Advantages of Door & Window Frames made from ZINCALUME® steel

ZINCALUME® steel	Other Coated Steel (e.g. Galvanised, Electro-galvanised steel)	Timber
<input checked="" type="checkbox"/> High corrosion resistance	<input checked="" type="checkbox"/> Low corrosion resistance	<input checked="" type="checkbox"/> Susceptible to rotting
<input checked="" type="checkbox"/> Termite proof	<input checked="" type="checkbox"/> Termite proof	<input checked="" type="checkbox"/> Prone to termite attacks
<input checked="" type="checkbox"/> Dimensionally stable - guaranteed material strength	<input type="checkbox"/> Material strength varies	<input checked="" type="checkbox"/> Low material strength, tends to sag, warp and twist
<input checked="" type="checkbox"/> Precisely manufactured to design - low wastage	<input type="checkbox"/> Inconsistent material strength cause high wastage	<input checked="" type="checkbox"/> Not manufactures to the design, High wastage on site
<input checked="" type="checkbox"/> Save time and money. Only top coat is sufficient. No primer is required	<input checked="" type="checkbox"/> Priming coat or phosphated is required	<input checked="" type="checkbox"/> Undercoat paint is required
<input checked="" type="checkbox"/> ZINCALUME® steel is a non combustible material	<input type="checkbox"/> Certification is required	<input checked="" type="checkbox"/> Not certified as 'Class O' material
<input checked="" type="checkbox"/> Brand text identity (to ensure genuine product purchase)	<input checked="" type="checkbox"/> No brand text identification	<input checked="" type="checkbox"/> No brand text identification
<input checked="" type="checkbox"/> Coating mass AZ150=150g/m ²	<input checked="" type="checkbox"/> Unknown	<input checked="" type="checkbox"/> Unknown

Material Selection :



ZINCALUME AZ150 come with Brand text identification



ALUZINC

EG / GA / GI



SUS304 HINGE

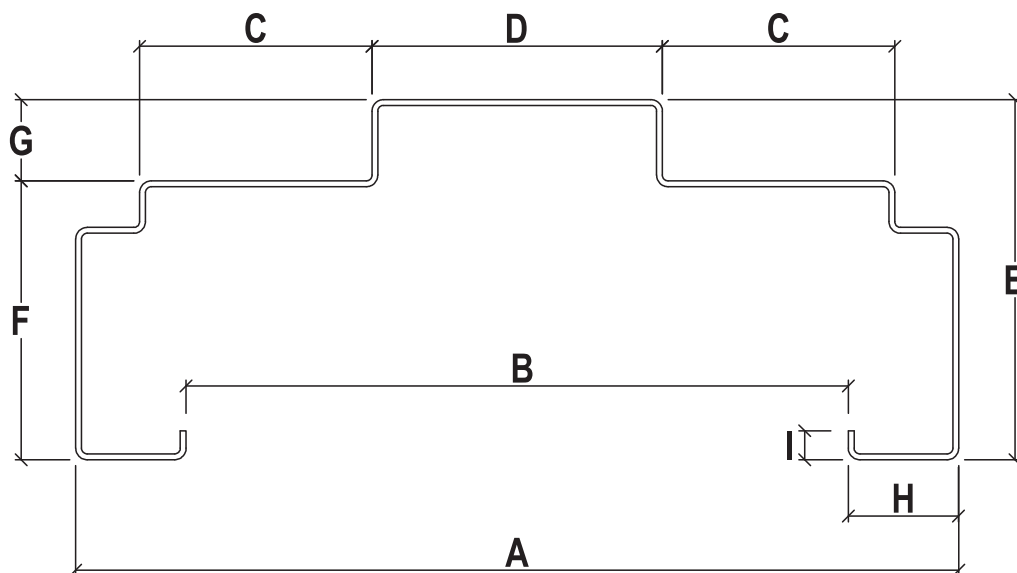


GI HINGE

** Facts about ZINCALUME® steel (AZ150):

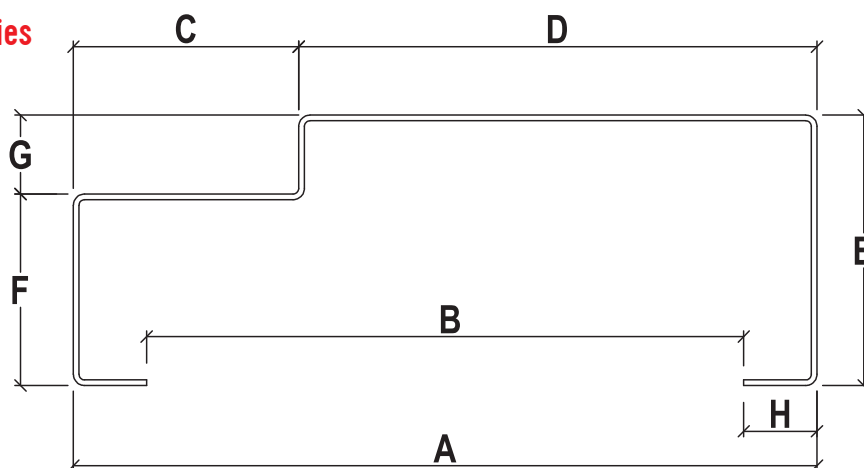
- ZINCALUME® steel is BlueScope's premium Aluminium/Zinc alloy coated steel.
- Trusted for lasting durability and corrosion resistance.
- BlueScope was the first manufacturer to produce Aluminium/Zinc alloy coated steel under the trademark of ZINCALUME®.
- Backed by Australian technology, BlueScope's proprietary coating technology comprising of 55% Aluminium, 43.5% Zinc, and 1.5% Silicon delivers superior corrosion resistance and long-lasting performance.
- ZINCALUME® steel is certified by SIRIM according to MS 1196 and AS 1397. Also meeting the material specification of MS 2718 : 2021 (Steel Door Frame-Specification).

1. With Architraves (WA) Series



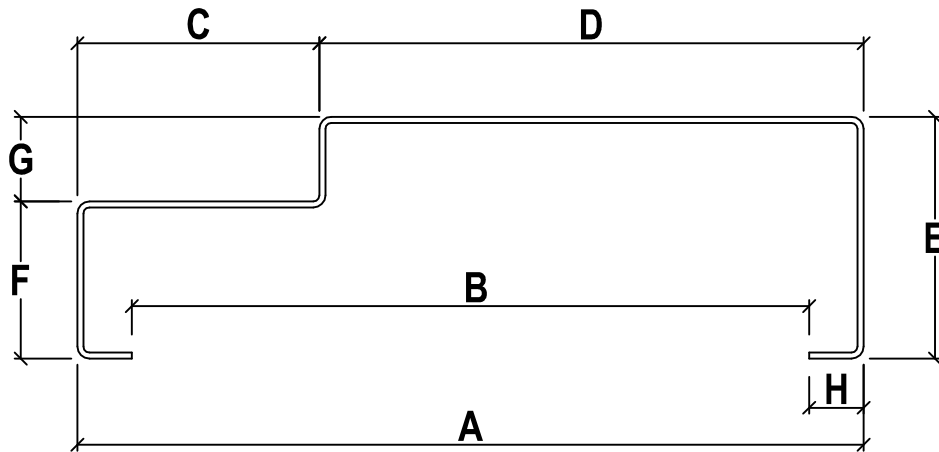
WA	Profile	A	B	C	D	E	F	G	H	I	Thickness
	105WA	106	80	40/14	30	44	30	14	13	2~5	0.8/1.0
	130WA	132	102	40	30	50	36	14	13	2~5	0.8/1.0
	140WA	142	116	40	40	44	30	14	13	2~5	0.8/1.0
	E150A	152	128	40	50	44	30	14	12	-	0.8/1.0
	S150WA	152	128	40	50	59	45	14	12	-	0.8/1.0
	150WA	152	114	40	50	62	48	14	19	2~5	0.8/1.0
	160WA	160	132	40	60	51	37	14	14	-	1~1.2
	166WA	166	140	40	50	52	38	14	13	-	0.8/1.0
	170WA	170	146	40	70	51	37	14	12	-	1~1.2
	180WA	180	158	40	80	51	37	14	11	-	1~1.2

2. Single Rebate Series



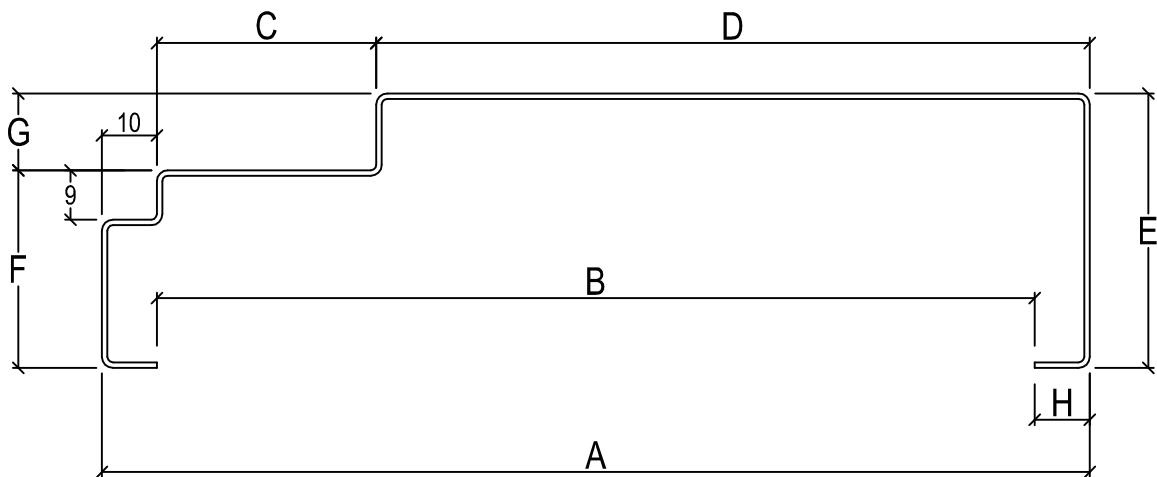
SR	A	B	C	D	E	F	G	H	Thickness
120	122	96	40/45	82	54	40	14	13	1.0/1.2
130	132	106	40/45	92	48	34	14	13	1.0/1.2
140	142	110	40/45	102	54	40	14	16	1.0/1.2
150	152	131	40/45	112	55	41	14	10.5	1.0/1.2
160	162	141	40/45	122	50	36	14	10.5	1.0/1.2
170	172	142	40/45	132	54	40	14	15	1.0/1.2
180	182	162	40/45	142	54	40	14	10	1.0/1.2

3. Single Rebate (E) Series



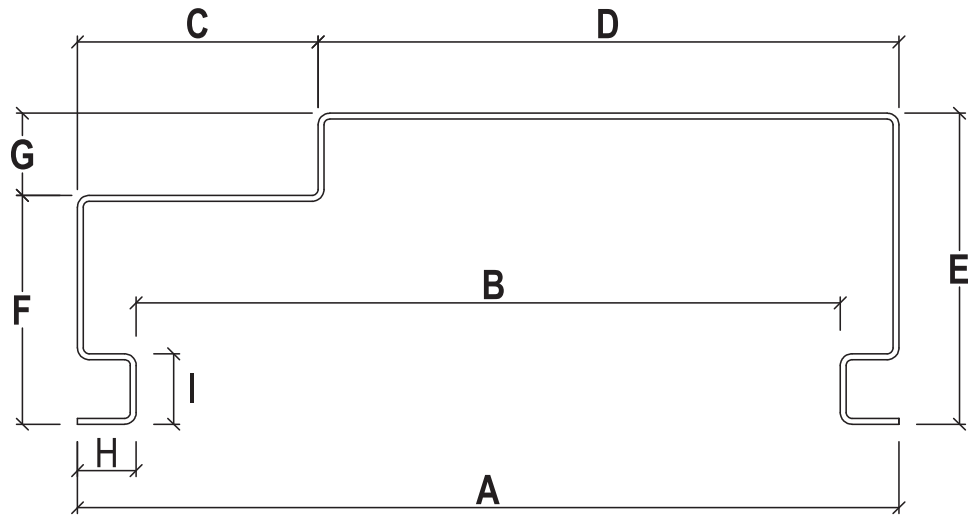
SR [E]	A	B	C	D	E	F	G	H	Thickness
120	120	102	40	80	36	22	14	9	1~1.2mm
130	130	112	40	90	40	26	14	9	1~1.2mm
140	140	122	40	100	40	26	14	9	1~1.2mm
150	150	129	40	110	40	26	14	10.5	1~1.2mm
160	160	142	40	120	40	26	14	9	1~1.2mm
170	170	152	40	130	40	26	14	9	1~1.2mm
180	180	158	40	140	40	26	14	11	1~1.2mm

4. Single Rebate With Architrave (SRWA) Series



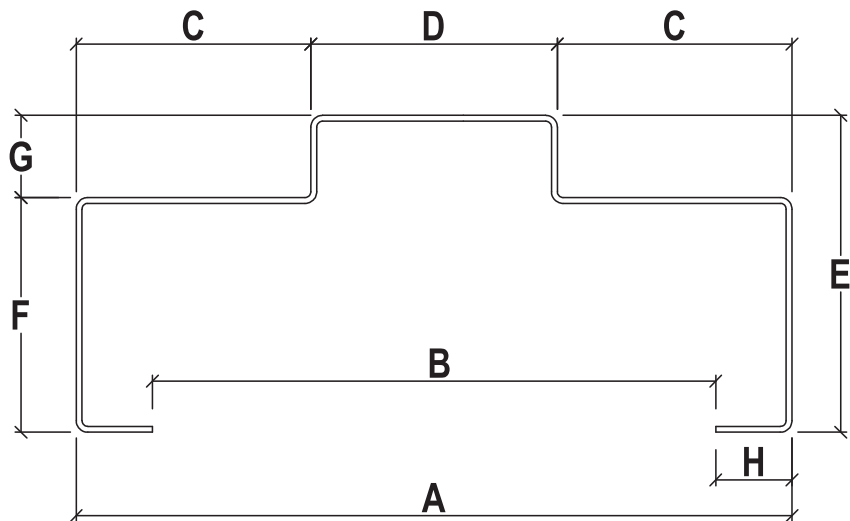
SRWA	A	B	C	D	E	F	G	H	Thickness
120	120	100	40/45	70	50	36	14	10	1.0/1.2
130	130	108	40/45	80	50	36	14	10	1.0/1.2
140	140	120	40/45	90	50	36	14	10	1.0/1.2
150	150	130	40/45	100	50	36	14	10	1.0/1.2
160	160	137	40/45	110	50	36	14	11.5	1.0/1.2
170	170	150	40/45	120	50	36	14	10	1.0/1.2
180	180	160	40/45	130	50	36	14	10	1.0/1.2

5. Single Rebate Groove Line Series



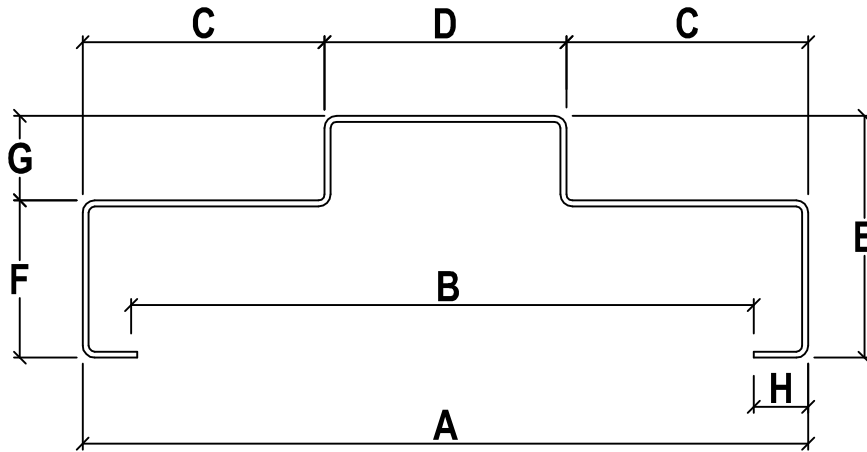
SRGL	A	B	C	D	E	F	G	H	I	Thickness
130	130	109	40/45	90	58	44	14	10	12	1.0/1.2
140	140	119	40/45	100	58	44	14	10	12	1.0/1.2
150	150	129	40/45	110	58	44	14	10	12	1.0/1.2
160	160	139	40/45	120	58	44	14	10	12	1.0/1.2
170	170	149	40/45	130	58	44	14	10	12	1.0/1.2
180	180	159	40/45	140	58	44	14	10	12	1.0/1.2

6. Double Rebate Series



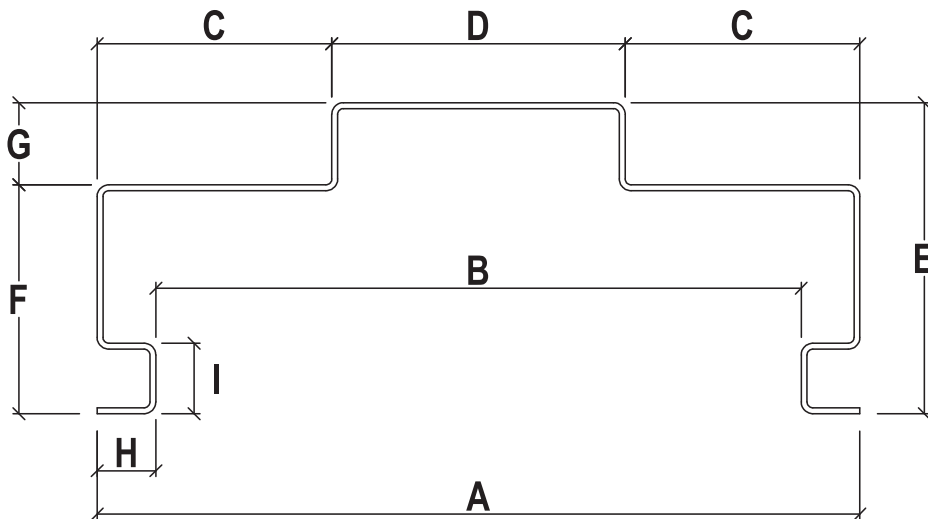
DR	A	B	C	D	E	F	G	H	Thickness
120	122	96	40/45	42	54	40	14	13	1.0/1.2
130	132	106	40/45	52	48	34	14	13	1.0/1.2
140	142	110	40/45	62	54	40	14	16	1.0/1.2
150	152	126	40/45	72	54	40	14	13	1.0/1.2
160	162	136	40/45	82	48	34	14	13	1.0/1.2
170	172	142	40/45	92	54	40	14	15	1.0/1.2
180	182	162	40/45	102	54	40	14	10	1.0/1.2

7. Double Rebate (E) Series



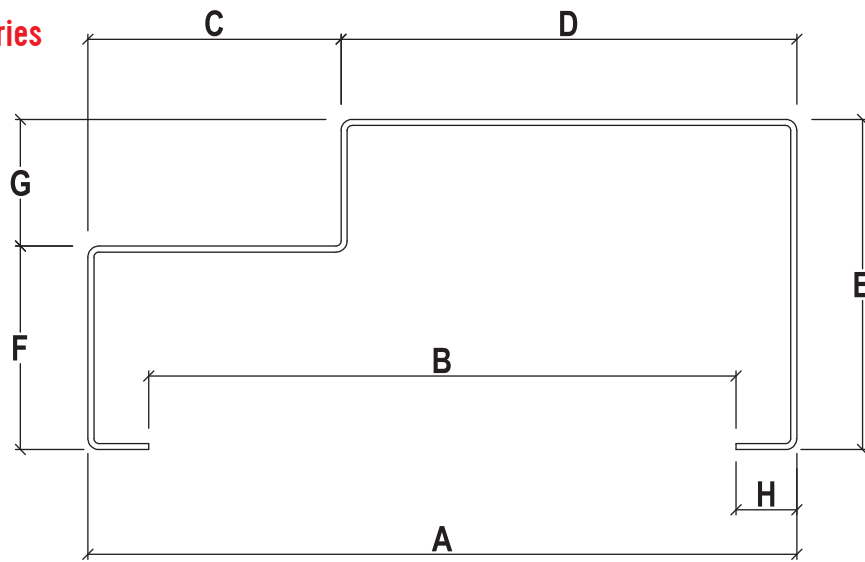
DR [E]	A	B	C	D	E	F	G	H	Thickness
120	120	102	40	40	36	22	14	9	1~1.2mm
130	130	112	40	50	40	26	14	9	1~1.2mm
140	140	122	40	60	40	26	14	9	1~1.2mm
150	150	129	40	70	40	26	14	10.5	1~1.2mm
160	160	142	40	80	40	26	14	9	1~1.2mm
170	170	152	40	90	40	26	14	9	1~1.2mm
180	180	158	40	100	40	26	14	11	1~1.2mm

8. Double Rebate Groove Line Series



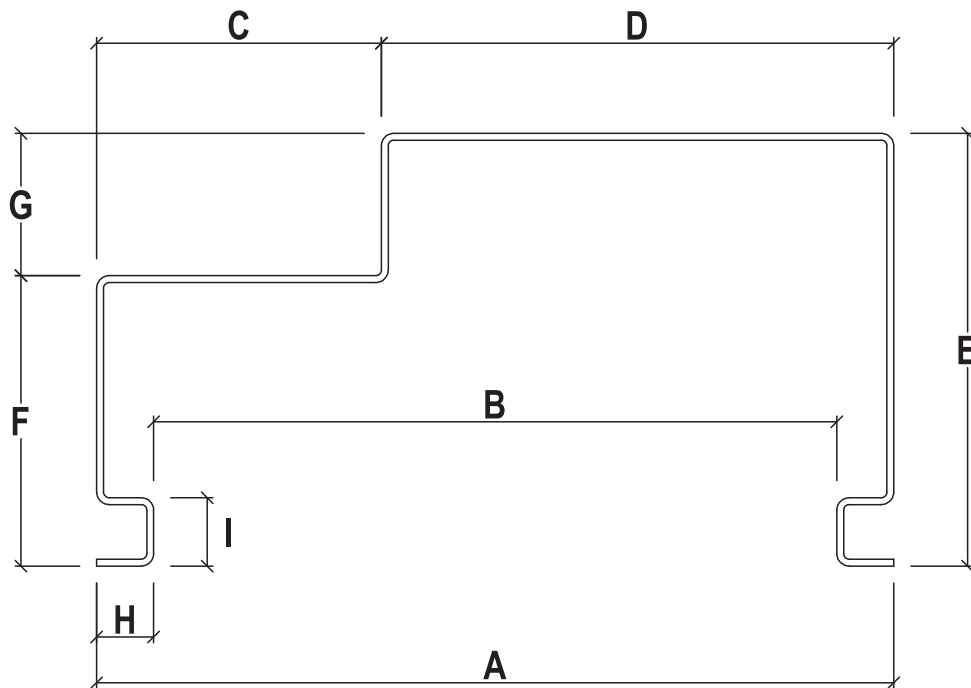
DRGL	A	B	C	D	E	F	G	H	I	Thickness
130	130	109	40/45	50	58	44	14	10	12	1.0/1.2
140	140	119	40/45	60	58	44	14	10	12	1.0/1.2
150	150	129	40/45	70	58	44	14	10	12	1.0/1.2
160	160	139	40/45	80	58	44	14	10	12	1.0/1.2
170	170	149	40/45	90	58	44	14	10	12	1.0/1.2
180	180	159	40/45	100	58	44	14	10	12	1.0/1.2

9. FR Single Rebate Series



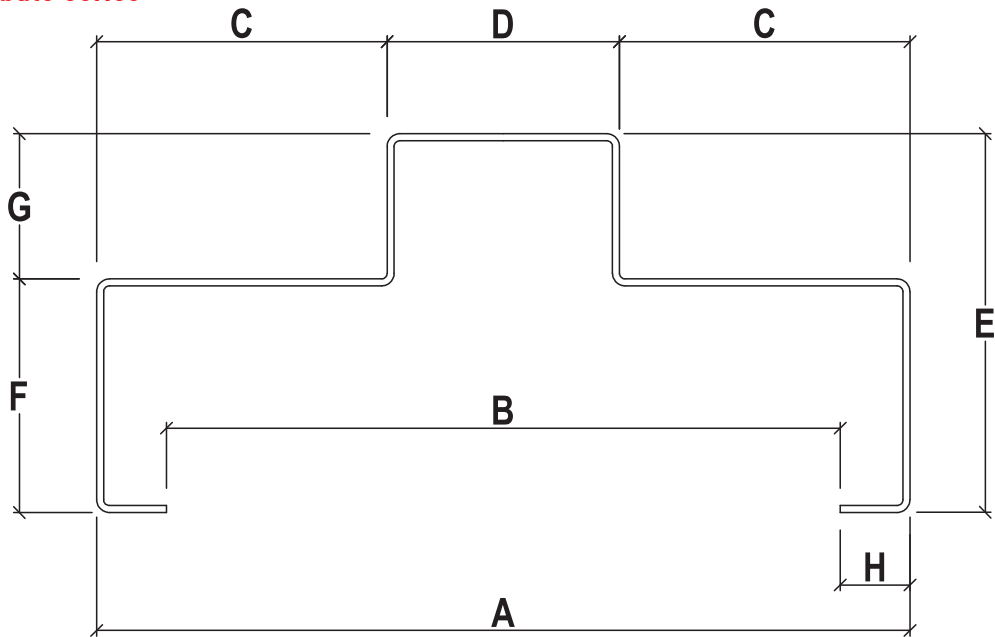
FRSR	A	B	C	D	E	F	G	H	Thickness
110	110	85	50/55	60	65	40	25	12	1.2/1.5
120	120	95	50/55	70	65	40	25	12	1.2/1.5
130	130	105	50/55	80	65	40	25	12	1.2/1.5
140	140	115	50/55	90	65	40	25	12	1.2/1.5
150	150	125	50/55	100	65	40	25	12	1.2/1.5
160	160	133	50/55	110	65	40	25	13	1.2/1.5
170	170	140	50/55	120	65	40	25	14.5	1.2/1.5
180	180	150	50/55	130	65	40	25	14.5	1.2/1.5

10. FR Single Rebate Groove Line Series



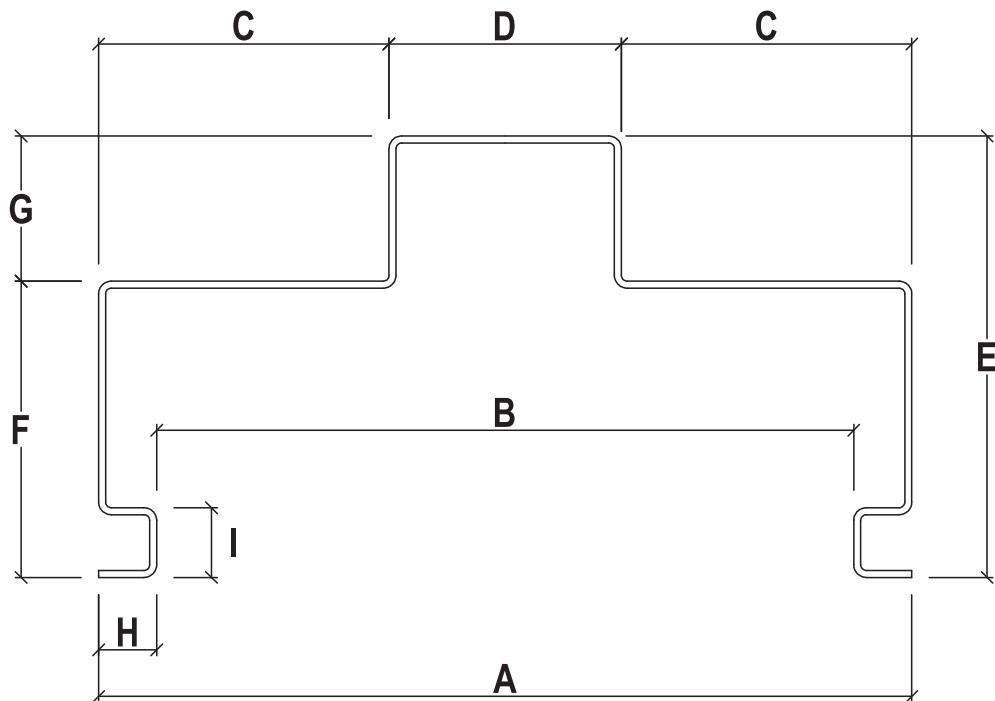
FRSRGL	A	B	C	D	E	F	G	H	I	Thickness
130	130	109	50/55	80	76	51	25	10	12	1.2/1.5
140	140	119	50/55	90	76	51	25	10	12	1.2/1.5
150	150	129	50/55	100	76	51	25	10	12	1.2/1.5
160	160	139	50/55	110	76	51	25	10	12	1.2/1.5
170	170	149	50/55	120	76	51	25	10	12	1.2/1.5

11. FR Double Rebate Series



FRDR	A	B	C	D	E	F	G	H	Thickness
130	130	105	50/55	30	65	40	25	12	1.2/1.5
140	140	115	50/55	40	65	40	25	12	1.2/1.5
150	150	125	50/55	50	65	40	25	12	1.2/1.5
160	160	133	50/55	60	65	40	25	13	1.2/1.5
170	170	140	50/55	70	65	40	25	14.5	1.2/1.5
180	180	150	50/55	80	65	40	25	14.5	1.2/1.5

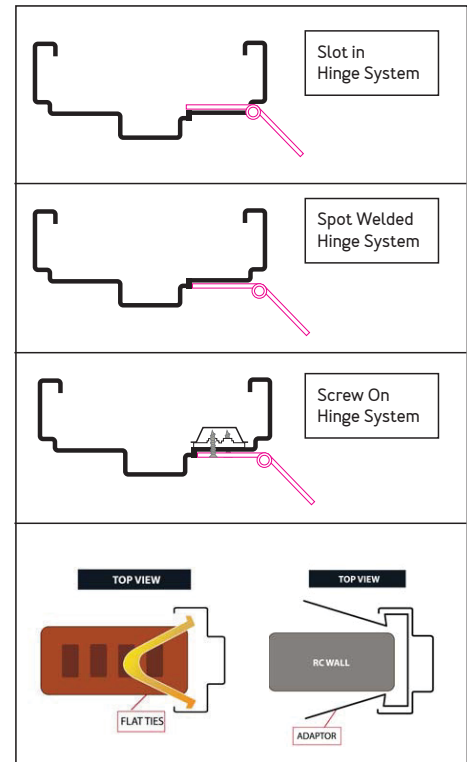
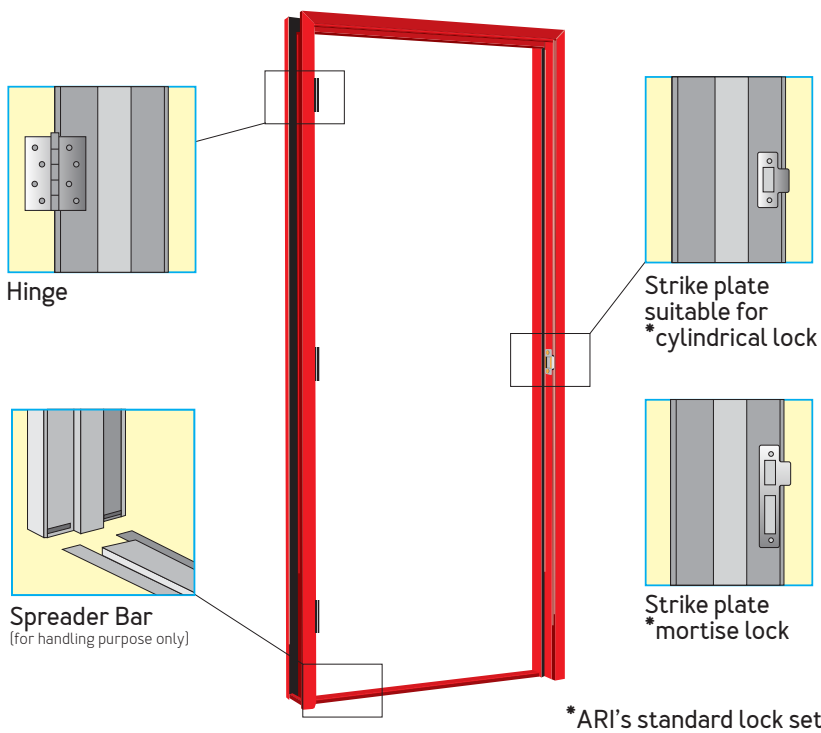
12. FR Double Rebate Groove Line Series



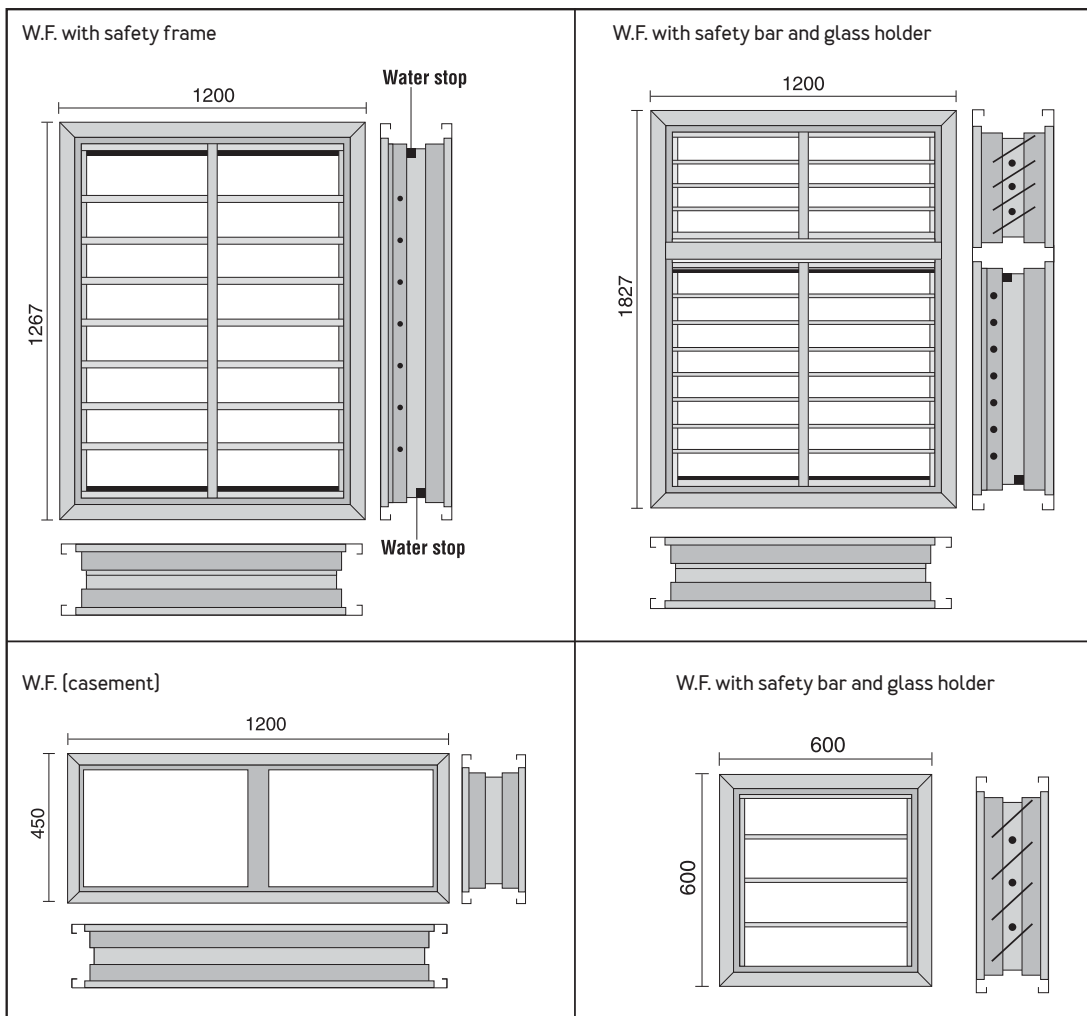
FRDRGL	A	B	C	D	E	F	G	H	I	Thickness
130	130	109	50/55	30	76	51	25	10	12	1.2/1.5
140	140	119	50/55	40	76	51	25	10	12	1.2/1.5
150	150	129	50/55	50	76	51	25	10	12	1.2/1.5
160	160	139	50/55	60	76	51	25	10	12	1.2/1.5
170	170	149	50/55	70	76	51	25	10	12	1.2/1.5

DOOR & METAL FRAMES

Location Of Hinges / Striker Plate



Ajiya Metal Window Frame

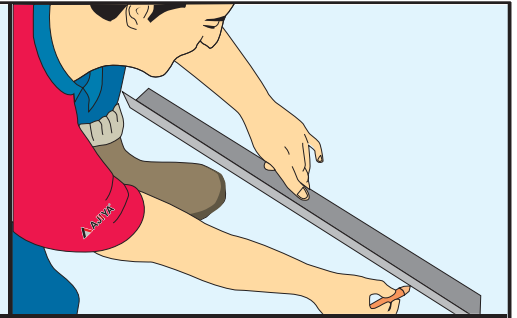


DOOR & METAL FRAMES

Installation Guide

1.

Mark out the area where the brickwork and the door is going to be.



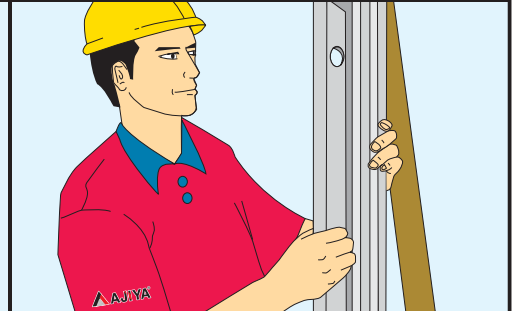
2.

Use two lengths of timber to prop up the door frame to standing position.



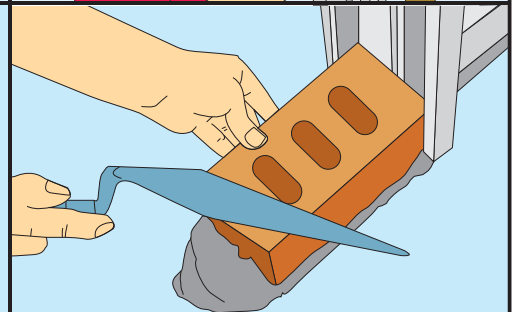
3.

Use a spirit level to plumb the frame. When it is plumbed, secure the timber stays with a couple of bricks.



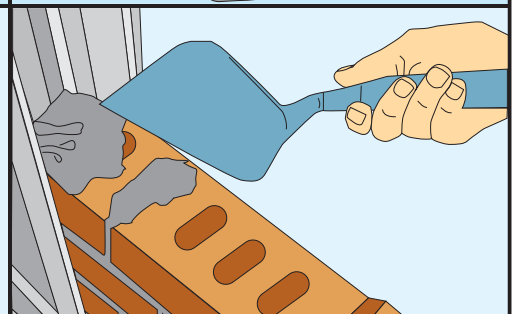
4.

You can now proceed to lay the bricks into the rebate at the back of the frame.



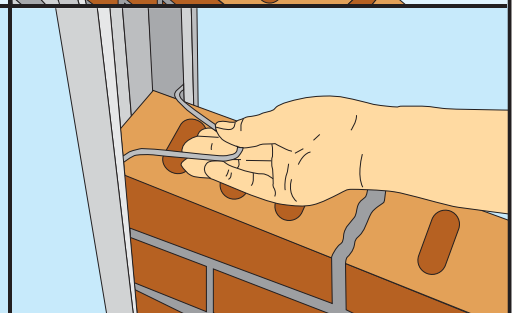
5.

Place mortar into the gap between the brick and the frame to ensure that the frame, when filled with cement, will be extremely rigid and strong.



6.

Each metal door frame is supplied with a number of flat ties. Use a flat ties every fourth or fifth course of bricks.

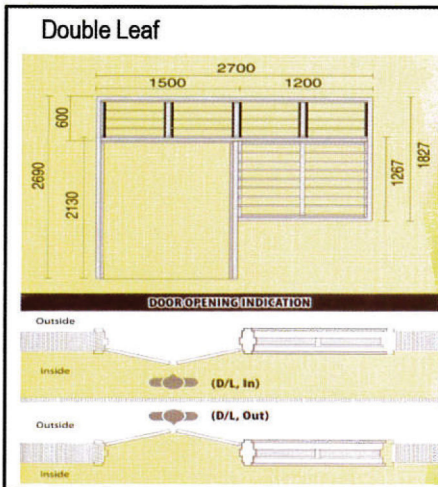
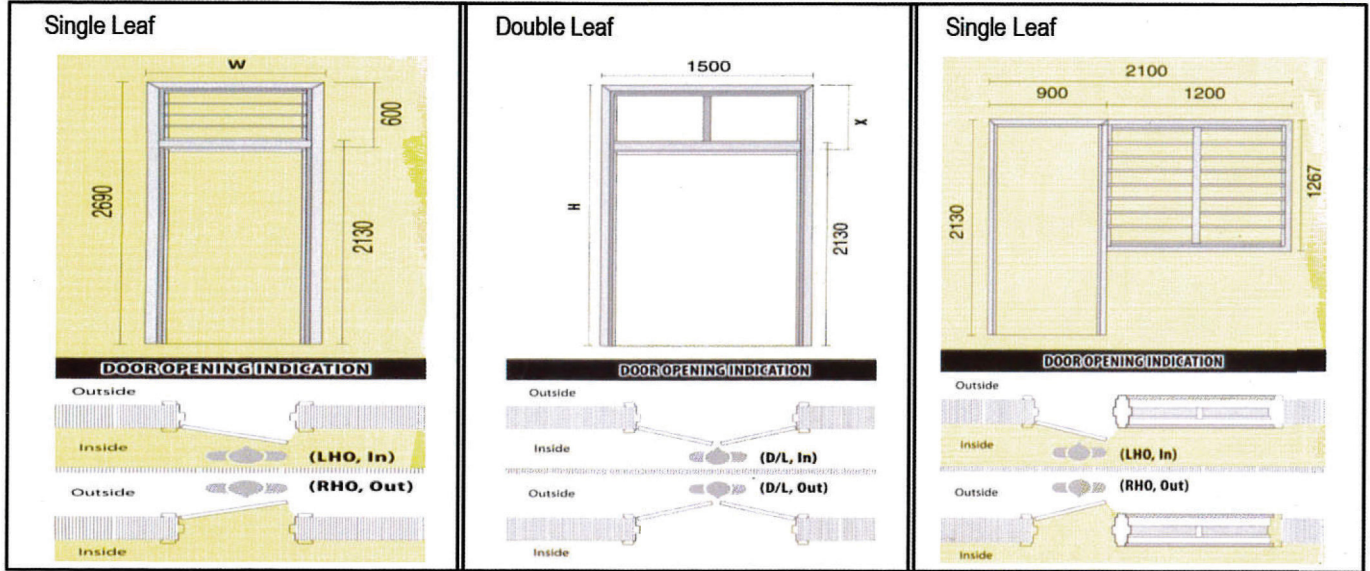


DOOR & METAL FRAMES

Installation Guide

Range of Door Window Frame Combination

Note: All diagrams shown on below are based on a typical 150WA profile.
(size may vary according to profile chosen)



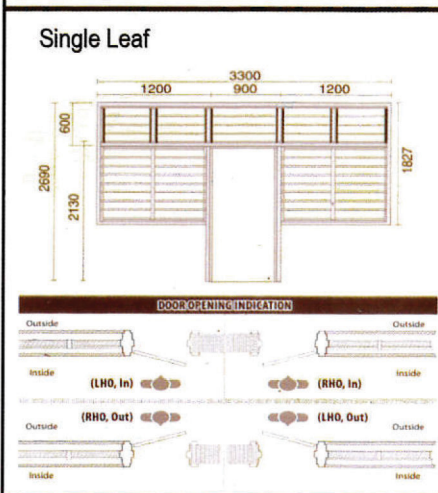
Door Opening



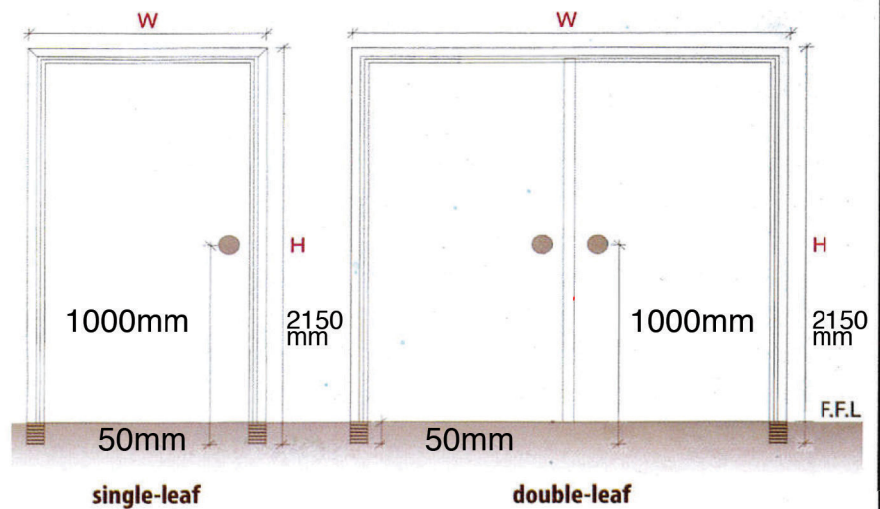
Always stand with the door opening towards you.

The side with the hinges is the determinant of the door opening (Left or right)

Diagram A



Finished Floor Level



ORDERING PROCEDURE

Please SPECIFY when ordering

Door Frame			
Profile			
Material			
Thickness			
Measurement	EXT / INT		
4" Hinge	GI / SUS202 / SUS304		
5" Hinge	SUS202 / SUS304		
Hinge Mounting Type	Spotwelded Type	Screw on Type	Slot in Type
Hinge Screw	GI / SUS304		
Flat Tie			
Adaptor			
Lockset (Ajiya)	Cylindrical / Mortise		
Lockset (Special)	Special Mortise *please provide sample lockset		
Lockset Height (from bottom of frame)	Ajiya Standard 1050mm		
	Specify: _____ mm		
Door opening	Left (L) / Right (R)		
Door window joint - opening	Push in / Pull out		

Window frame	_____ bays/panels
Safety bar	12mm solid / 16mm pipe
MULLION	RHS1 1/2frame
Divider	RHS1 1/2frame

*Please attach if any special requirement / drawing

Corporate Head Office & Factory
Lot 153, Kawasan Perindustrian
Jalan Genuang, 85000 Segamat,
Johor.
Tel : +607-943 4211
Fax : +607-943 1054
Email: enquiry@ajiya.com

Marketing HQ & Factory
No. 4, Jalan Sg Pelubung 32/149
Seksyen 32, 40460 Shah Alam,
Selangor.
Tel : +603-5121 0011
Fax : +603-5121 0111

Southern Marketing Office & Factory
Lot 7068, Jalan Seelong,
Kampung Maju Jaya,
81300 Johor Bahru, Johor.
Tel : +607-557 3733
Fax : +607-556 5733

Mentakab Marketing Office & Factory
No.11, Jalan Industri 3/5,
Taman Perindustrian Temertoh,
28400 Mentakab, Pahang.
Tel : +609-270 1313 Fax : +609-270 1311

Related Companies

ARI UTARA SDN BHD (273092-U)
Lot 28, Taman Perindustrian Bukit
Makmur, 08000 Sungai Petani,
Kedah.
Tel : +604-442 2899
Fax : +604-442 2799

Subsidiary Companies

ARI TIMUR (KB) SDN BHD (714587-K)
Lot 1306, Kawasan Perindustrian
Pengkalan Chepa II, 16100 Kota
Baru, Kelantan. Tel : +609-774
5946 Fax : +609-774 6946



The information and illustration contained herein are for guidance only. Care has been taken to ensure all data and information herein is factual and numerical values are accurate at the time of publication. However, any or all technical specification, information and dimensions are nominal and provisional; they are F subjected to change and variations in accordance with market condition at the date of factual supply. No representation is made or to be implied as to the date and information herein; Asia Roofing Industries Sdn. Bhd. and its subsidiary and Bu associate companies shall not be responsible for any errors in or misrepresentation of the information contained in this brochure or its use. Asia Roofing Industries Sdn. Bhd. and its subsidiary and associate companies reserve the right to alter any or all specification as deemed fit and necessary without prior notice. Colours printed in this brochure are as close as normal printing process would allow and customer are advised to check and verify your chosen colour against an actual sample of the product before purchasing.



SIRIM QAS International hereby certifies that
ASIA ROOFING INDUSTRIES SDN. BHD.
LOT 153, KAWASAN PERINDUSTRIAN
JALAN GENUANG
85000 SEGAMAT
JOHOR DARUL TAKZIM
MALAYSIA

has implemented a Quality Management System complying with

ISO 9001 : 2015
QUALITY MANAGEMENT SYSTEMS - Requirements

Scope of Certification:

MANUFACTURE OF:
1) METAL DOOR AND WINDOW FRAMES
2) METAL CEILING AND LOUVER PRODUCTS.

Certification applicable to Multi-site
Total number of 4

Issue date
Original cert
Expiry date
Certificate no.

Har Fachlan bin
Chief Executive C
SIRIM QAS Internl



SCHEDULE

NE BLUESCOPE MALAYSIA SDN. BHD.



Trade Mark: ZINCALUME
Model: STRUCTURAL QUALITY GRADE - 5555 & 5560
Rating: COATING DESIGNATION - AZ150, AZ200
Size: NOMINAL BASE METAL THICKNESS (mm) = 0.30 - 1.20



Trade Mark: TRUECORE
Model: STRUCTURAL QUALITY GRADE - 5555
Rating: COATING DESIGNATION - AZ150
Size: NOMINAL BASE METAL THICKNESS (mm) = 0.30 - 1.20



SPECIFICATIONS SAMPLE

Metal Door Frame :

Ajiya Metal Door "PROFILE ①" "MATERIAL ②" "HINGES ③" in striker plate and accessories in filled with cement sand (1:3) grout and fixed to brick wall or concrete all in accordance with the manufacturer's instructions.

- ① Profile : AJIYA SR150/40 x 55
- ② Material : AJIYA Zincalume AZ150, 1.0mm thick come with Brand Text.
- ③ Hinge : AJIYA SUS304 hinge 100mm, 2.0mm thick come with coated slot in type system.

Metal Window Frame :

Window frame ; come with 16mm GI pipe and fixed louver on top.