

# AJIYA<sup>®</sup>

## ROOFING PRODUCTS

Clip And Locking System



A002058 A002878



MS 2500 : 2012  
PC003285 PCV03380



MS ISO 9001:2015 REG. No. AR 0954



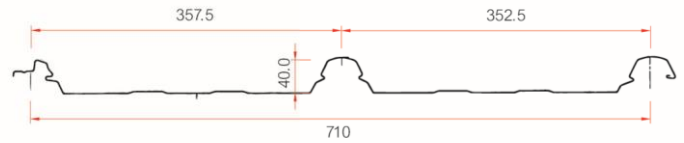
[www.ajiya.com](http://www.ajiya.com)

# CLS 708

Concealed Locking System



## SECTIONAL PROFILE



### Dimensions

Rib height : 40mm ± 1mm

Effective cover : 710mm

Minimum roof pitch : 1°

### Tolerance

Thickness for material : ±0.03mm

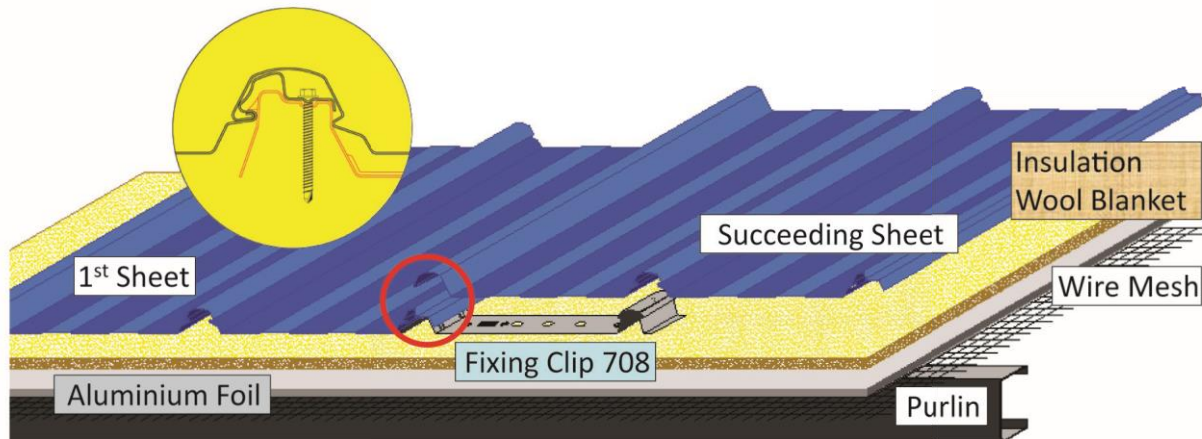
Effective Width : ±5mm

Finishing Length : ±5mm

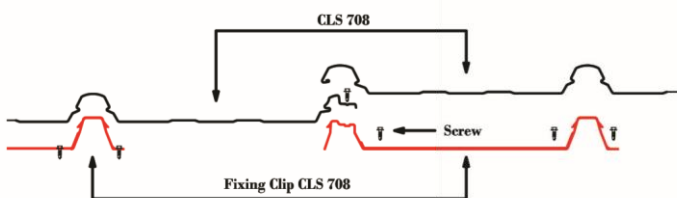
- Manufactured from high tensile steel substrate protected with corrosion inhibitive treatment.
- Concealed fixing method with clip and locking system.
- Effective cover width of 710mm and rib height of 40mm.
- Combined with smart fluted spans and a lock-action rib design.
- Roofing and walling profiles with material warranty up to 25 years. *(Warranty terms & conditions apply)*
- For minimum roof pitch of 1°.
- Strongly recommend for application from low pitched roofs to vertical or horizontal ribbed walling for warehouse, shop offices, exhibition halls, and etc.

## INSTALLATION METHOD

The 1st sheet can be accurately positioned with help of alignment reference by fixing Clip 708 itself. A 'click' sound indicates the positive engagement between the roof sheet and the fixing clips. A self-drilling steel screw shall be used on NEW Conceal Locking System between female-rib and fixing clips. Succeeding sheets are laid each time after a new set of fixing clips which are placed firmly.



Please contact your nearest Asia Roofing Industries Sdn. Bhd. for advice on use of an expansion joint, or use long length sheet from a mobile roll former.



AJIYA CLS 708 WITH FIXING CLIP



AJIYA CLS 708 FIXING CLIP



CLS 708	AVAILABLE THICKNESS ***						
	Base Metal Thickness (mm)	Total Coated Thickness (mm)	* Weight per meter (kg/m)	* Weight per sq meter (kg/m <sup>2</sup> )	* Coverage per ton (m <sup>2</sup> /MT)	Steel Grade	Minimum Yield Strength (MPa)
	0.40	0.46	3.01	4.27	234	JIS3312(MS2383) / AS1397 (MS1196)	550
	0.42	0.48	3.15	4.47	224	JIS3312(MS2383) / AS1397 (MS1196)	550
0.48**	0.53	3.58	5.08	197	JIS3312(MS2383) / AS1397 (MS1196)	550	

- Total Coated Thickness (TCT) depends on Coating Mass. Please contact our technical department for advice, or, other thickness.

\*Weight shown above is depending on material used.

\*\*0.48mm: Depends on material availability.

CLS 708	DISTRIBUTED LOAD CAPACITY - CONTINUOUS SPAN CONDITION ***											
	Thickness (mm) [BMT]	Span	mm	900	1050	1200	1350	1500	1650	1800	1950	2100
	0.40	Serviceability	kN/m <sup>2</sup>	2.18	1.68	1.33	1.13	0.93	0.83	0.73	0.63	0.58
		Strength		3.47	2.67	2.11	1.79	1.47	1.31	1.15	0.99	0.91
0.42	Serviceability	2.28		1.83	1.48	1.23	1.08	0.93	0.78	0.68	0.63	
	Strength	3.64		2.92	2.36	1.96	1.72	1.48	1.24	1.08	1.00	
0.48	Serviceability	2.93		2.23	1.93	1.63	1.38	1.18	1.03	0.88	0.78	
	Strength	4.68		3.56	3.08	2.60	2.20	1.88	1.64	1.40	1.24	

- Based on dead load 0.1kN/m<sup>2</sup>, Live load 0.25kN/m<sup>2</sup> & wind load 0.75kN/m<sup>2</sup>.

- Deflection Limit: SPAN/180.

CLS 708	RECOMMENDED MAXIMUM SPACING OF SUPPORTS ***									
	Base Metal Thickness (mm)	Total Coated Thickness (mm)	ROOF				WALL			
			Single Span (mm)	End Span (mm)	Internal Span (mm)	Cantilever (mm)	Single Span (mm)	End Span (mm)	Internal Span (mm)	Cantilever (mm)
	0.40	0.46	1600	1500	1800	250	1600	1500	1600	250
0.42	0.48	1600	1600	1900	250	1800	1600	1700	250	
0.48	0.53	2000	1800	2300	300	2300	1800	2000	300	

- Based on dead load 0.1kN/m<sup>2</sup>, Live load 0.25kN/m<sup>2</sup> & wind load 0.75kN/m<sup>2</sup>.

CLS 708	RECOMMENDED MAXIMUM ROOF LENGTH (M) ***					
	SLOPE IN DEGREE	1°	2°	3°	5°	7.5°
		RAINFALL (mm/h)				
	250	133	166	194	241	288
300	111	138	162	201	240	
400	83	103	121	151	180	
500	66	83	97	120	144	

- The amount of water that must be shed increases with the length of the roof. To avoid possible back-up of water in severe wind conditions, the following recommended roof length should be considered as maximum for a given roof pitch and rain fall rate.

\*\*\* All thickness shown above is nominal & provisional. The information contained herein is factual and numerical value are accurate at time of publication and subject to actual site condition.



# GENERAL INFORMATION

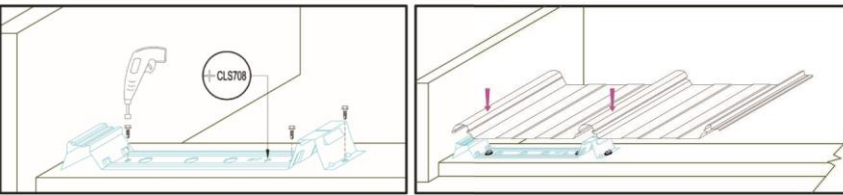
## FIXING TO STEEL SUPPORTS

	Thickness	No Insulation (Directly to supports)	Over Insulation Blanket
CLS 708	Up to 4.5mm	No. 10 - 12 x 25mm wafer head self-drilling steel screws	Increase to 22mm long screw if required
	Exceed 4.5mm	No. 12 - 24 x 32mm wafer head self-drilling steel screws	

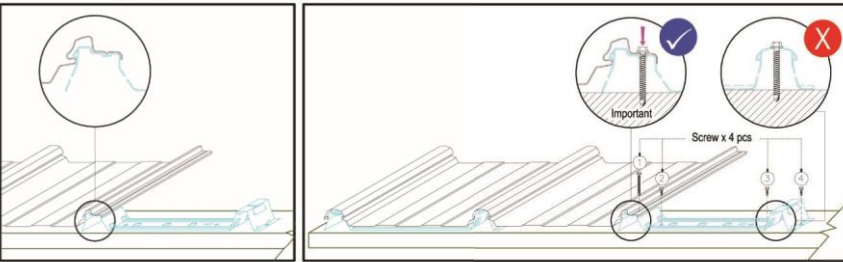
## INSTALLATION STEPS

### CLS 708

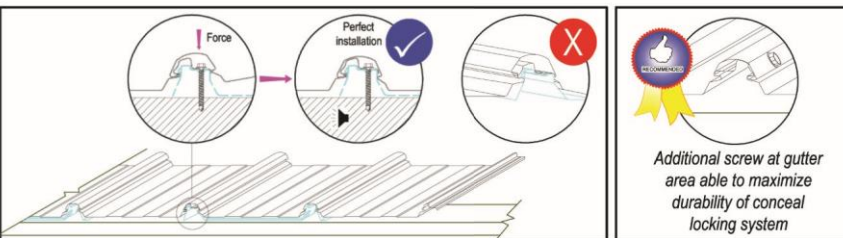
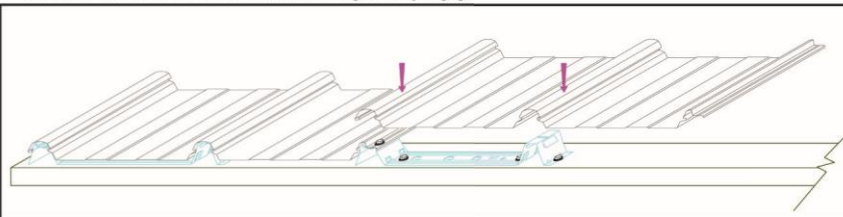
1. 1<sup>st</sup> piece alignment can easily done by using pre-punch "+" at Fixing Clip CLS 708



2. Overlap the fixing clip into the roofing sheet. Ensure the fixing clip is placed properly with the roofing sheet  
All the screw (4pcs) must be fastened at the proper location



3. Ensure the interlocking ribs be engaged firmly between the both roof sheet  
A distinct "CLICK" will be heard as the interlocking ribs fully engage



Remark : Perfect lapping ensure efficient conceal locking system

## SAMPLE OF SPECIFICATION

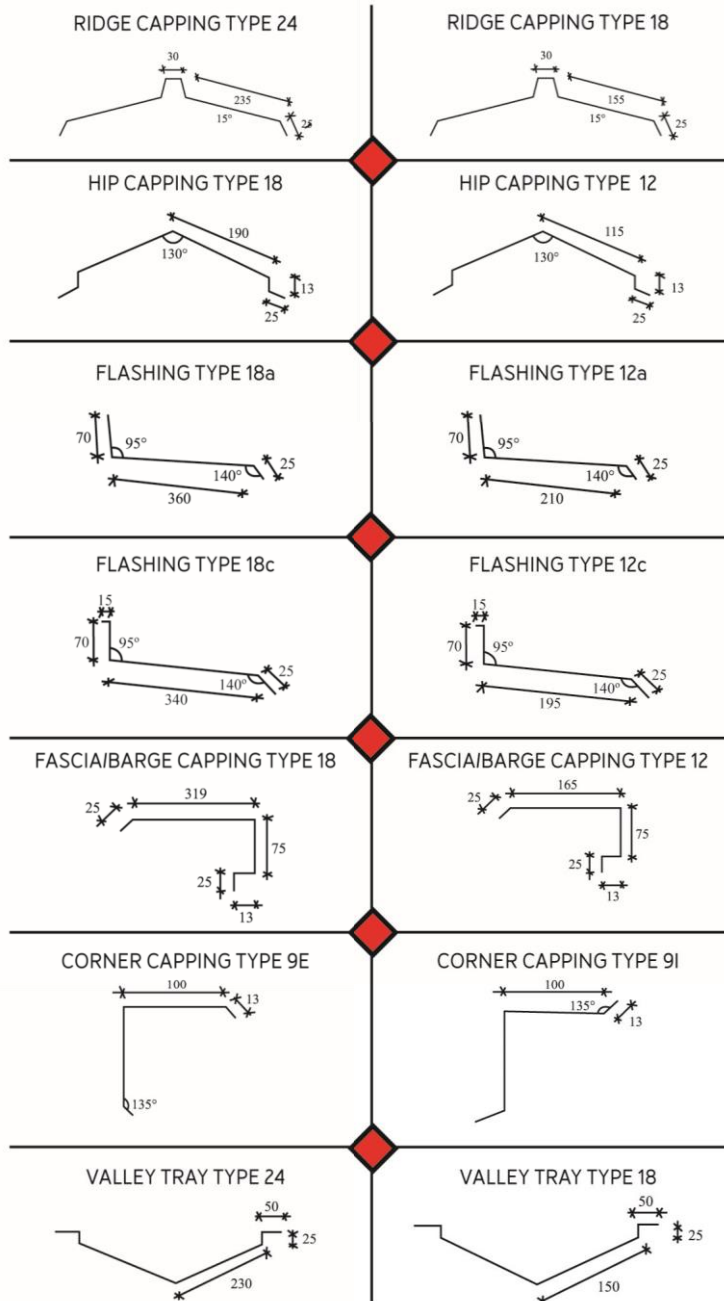
To supply **AJIYA CLS 708 Concealed Locking System** High Tensile Metal Roofing Sheets to be fixed onto Ajiya Fixing Clip CLS 708 in Pre-painted hot-dipped zinc-coated steel OR Pre-painted hot-dipped zinc aluminium alloy-coated steel to be fixed with/without insulation, and come complete with necessary fitting and accessories.

Note: Details in accordance with manufacturer's instructions.





# AJIYA STANDARD CAPPING / FLASHING



**Corporate Head Office & Factory**  
 Lot 153, Kawasan Perindustrian  
 Jalan Genuang, 85000 Segamat,  
 Johor.  
 Tel : +607-943 4211  
 Fax : +607-943 1054  
 Email: enquiry@ajiya.com

**Marketing HQ & Factory**  
 No. 4, Jalan Sg Pelubung 32/149  
 Seksyen 32, 40460 Shah Alam,  
 Selangor.  
 Tel : +603-5121 0011  
 Fax : +603-5121 0111

**Southern Marketing Office & Factory**  
 Lot 7068, Jalan Seelong,  
 Kampung Maju Jaya,  
 81300 Johor Bahru, Johor.  
 Tel : +607-557 3733  
 Fax : +607-556 5733

**Mentakab Marketing Office & Factory**  
 No.11, Jalan Industri 3/5,  
 Taman Perindustrian Temerloh,  
 28400 Mentakab, Pahang.  
 Tel : +609-270 1313  
 Fax : +609-270 1311

**Related Companies**

**ARI UTARA SDN BHD** (273092-U)  
 Lot 28, Taman Perindustrian  
 Bukit Makmur, 08000 Sungai Petani,  
 Kedah.  
 Tel : +604-442 2899  
 Fax : +604-442 2799

**Subsidiary Companies**

**ARI TIMUR (KB) SDN BHD** (714587-K)  
 Lot 1306, Kawasan Perindustrian  
 Pengkalan Chepa II,  
 16100 Kota Bharu, Kelantan.  
 Tel : +609-774 5946  
 Fax : +609-774 6946



[www.ajiya.com](http://www.ajiya.com)

## COLOR SELECTION CHART



AJIYA Colour Chart



PrimaMaju Colour Chart



CEP Colour Chart



CCB Colour Chart

**Note:**

Colours printed in this brochure are as close as normal printing process would allow and customers are advised to check and verify your chosen colour against an actual sample of the product before purchasing.

Other colours and thickness available upon request. Subject to stock availability and time delivery. All colours shown above are close to the actual steel colour as the limitation of the actual colour tones.

The information and illustration contained herein are for guidance only. Care has been taken to ensure all data and information herein is factual and numerical values are accurate at the time of publication. However, any or all technical specification, information and dimensions are nominal and provisional; they are subjected to change and variations in accordance with market conditions at the date of factual supply. No representation is made or to be implied as to the data and information herein; Asia Roofing Industries Sdn. Bhd. and its subsidiary and associate companies shall not be responsible for any errors in or misrepresentation of the information contained in this brochure or its use. Asia Roofing Industries Sdn. Bhd. and its subsidiary and associate companies reserve the right to alter any or all specifications as deemed fit and necessary without prior notice.