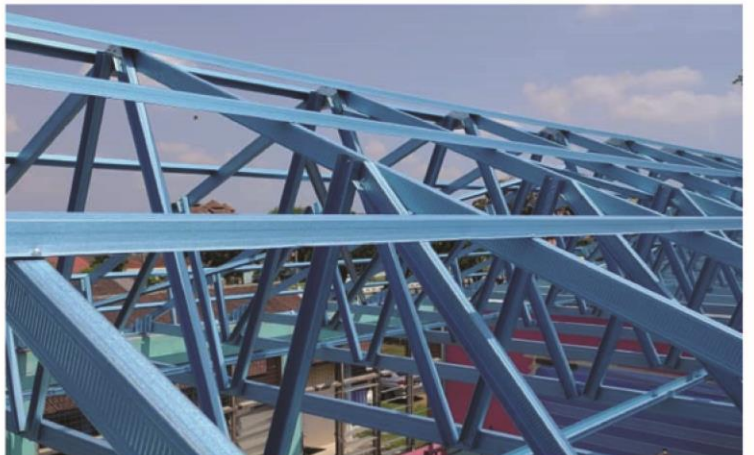


ASIA ROOFING INDUSTRIES SDN BHD

LIGHTWEIGHT TRUSS SYSTEM



ASIA ROOFING INDUSTRIES SDN BHD LIGHTWEIGHT TRUSS SYSTEM

Asia Roofing Industries Sdn Bhd Truss System is made of light-weight high-tensile galvanised or zinc/aluminium alloy coated steel. It is designed for optimum strength at minimum cost to meet building industrial demand and also to complement any roofing systems. With its many advantages over timber or mild steel trusses, Asia Roofing Industries Sdn Bhd high-tensile steel truss system, which is more stable, durable and environmental-friendly, will certainly be the preferred choice of truss systems. A reliable and latest engineering software complying to various design standards is used in Asia Roofing Industries Sdn Bhd Truss System.

ADVANTAGES



• Certified by IBS (Industrial Building System)



• Homogeneous material - consistent quality



• Light-weight and durable



• Practical installation



• Termite-proof and rust-resistant



• Environmental-friendly



• Non-combustible material - fire resistant



• Certified by JKR

WARRANTY

Asia Roofing Industries Sdn Bhd Truss System fulfils International Standards in terms of material specification and engineering design. A performance warranty of 10 years* will be issued upon client request and installation verified in compliance with the Quality Control plan.

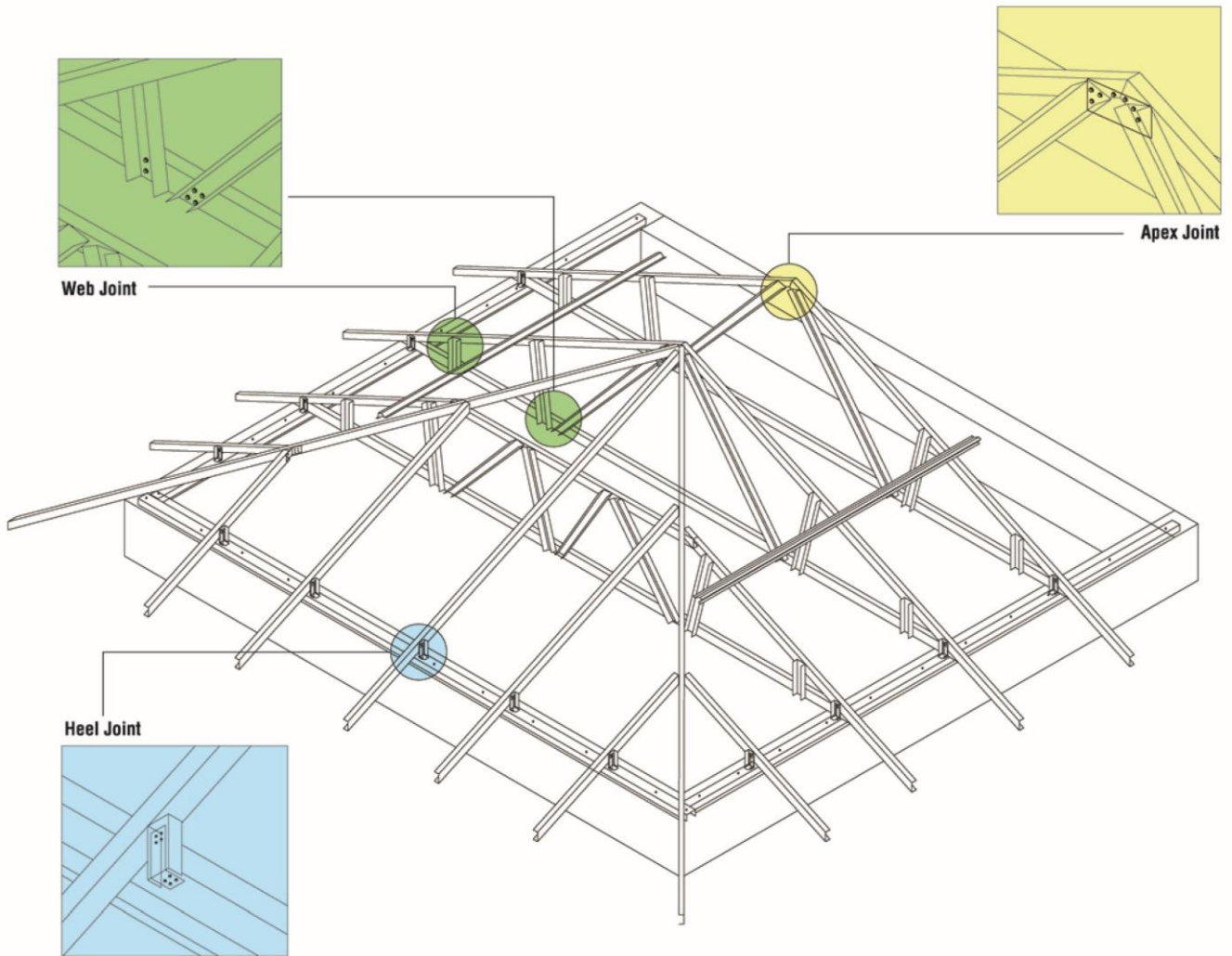
*Warranty Terms & Conditions apply.

PROFILE SECTIONS

	Profile	C05575	C05508	C05510	
	Thickness (BMT)	0.75mm	0.80mm	1.0mm	
	Material : High-Tensile Steel				
	Yield Strength : 550 MPa				
	Profile	C7575	C7508	C7510	C7512
	Thickness (BMT)	0.75mm	0.80mm	1.0mm	1.2mm
	Material : High-Tensile Steel				
	Yield Strength : 550 MPa				
	Profile	C10010			
	Thickness (BMT)	1.0mm			
	Material : High-Tensile Steel				
	Profile	C10016			
	Thickness (BMT)	1.6mm			
	Material : Hot-dipped high Tensile Steel				
Yield Strength : 450 MPa					

	Batten MB30K	
	Thickness (BMT)	0.40/0.42mm
	Material : High-Tensile Steel	
	Yield Strength : 550 MPa	
	Batten MB35	
	Thickness (BMT)	0.42/0.50mm
	Material : High-Tensile Steel	
	Yield Strength : 550 MPa	
	Batten MB35K	
	Thickness (BMT)	0.42/0.50mm
	Material : High-Tensile Steel	
	Yield Strength : 550 MPa	
	Batten MB41	
	Thickness (BMT)	0.42/0.50mm
	Material : High-Tensile Steel	
	Yield Strength : 550 MPa	
	Batten MB60	
	Thickness (BMT)	0.42/0.50mm
	Material : High-Tensile Steel	
	Yield Strength : 550 MPa	

TYPICAL TRUSS JOINT CONNECTION



SAMPLE OF SPECIFICATION

Asia Roofing Industries Sdn Bhd Truss System in light-weight high-tensile galvanised or zinc/ aluminium alloy-coated steel. Truss details in accordance to manufacturer's drawing and instructions.



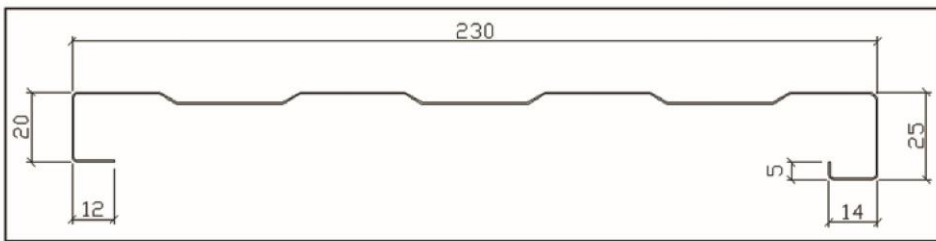
LIGHTWEIGHT TRUSS SYSTEM

ASIA ROOFING INDUSTRIES SDN BHD METAL FASCIA BOARD

Asia Roofing Industries Sdn Bhd Metal Fascia Board can be incorporated with Asia Roofing Industries Sdn Bhd Truss System and Metal Roofing System. It has innovative advantages over conventional timber fascia board. Apart from being environment friendly, steel available and is much more stable in cost as compared to other materials.



SPECIFICATION



Material :
 PPGL
 Aluzinc/ Zincalume
 Zincalume

Thickness :
 0.47 TCT
 0.47 TCT
 0.53 TCT

Colours Available :
 -Light Beige

PROJECT PHOTOS



CERTIFICATE



SAMPLE OF SPECIFICATION

AJIYA® Metal Fascia Board 230mm in pre-painted hot-dipped zinc-coated steel or pre-painted hot-dipped zinc/aluminium alloy-coated steel, come complete with necessary fittings and accessories. Details in accordance with manufacturer's instructions.

All the information contained herein is factual and numerical values are accurate at the time of publication and subject to actual site conditions.

Corporate Head Office & Factory
 Lot 153, Kawasan Perindustrian
 Jalan Genuang, 85000 Segamat,
 Johor.
 Tel: +607-943 4211
 Fax: +607-943 1054
 Email: enquiry@ajiya.com

Marketing HQ & Factory
 No. 4, Jalan Sg Pelubung 32/149
 Seksyen 32, 40460 Shah Alam,
 Selangor.
 Tel: +603-5121 0011
 Fax: +603-5121 0111

Southern Marketing Office & Factory
 Lot 7068, Jalan Seelong,
 Kampung Maju Jaya,
 81300 Johor Bahru, Johor.
 Tel: +607-557 3733
 Fax: +607-556 5733

Mentakab Marketing Office & Factory
 No.11, Jalan Industri 3/5,
 Taman Perindustrian Temerloh,
 28400 Mentakab, Pahang.
 Tel: +609-270 1313
 Fax: +609-270 1311

Related Companies
ARI UTARA SDN BHD (273092-U)
 Lot 28, Taman Perindustrian
 Bukit Makmur, 08000 Sungai Petani,
 Kedah.
 Tel: +604-442 2899
 Fax: +604-442 2799

Subsidiary Companies
ARI TIMUR (KB) SDN BHD (714587-K)
 Lot 1306, Kawasan Perindustrian
 Pengkalan Chepa II,
 16100 Kota Bharu, Kelantan.
 Tel: +609-774 5946
 Fax: +609-774 6946

The information and illustration contained herein are for guidance only. Care has been taken to ensure all data and information herein is factual and numerical values are accurate at the time of publication. However, any or all technical specification, information and dimensions are nominal and provisional; they are subjected to change and variations in accordance with market conditions at the date of factual supply. No representation is made or to be implied as to the data and information herein; Asia Roofing Industries Sdn. Bhd. and its subsidiary and associate companies shall not be responsible for any errors in or misrepresentation of the information contained in this brochure or its use. Asia Roofing Industries Sdn. Bhd. and its subsidiary and associate companies reserve the right to alter any or all specifications as deemed fit and necessary without prior notice.