



AJIYA® Lightweight Steel Frame Building System



GREEN



**MANPOWER
EFFICIENT**



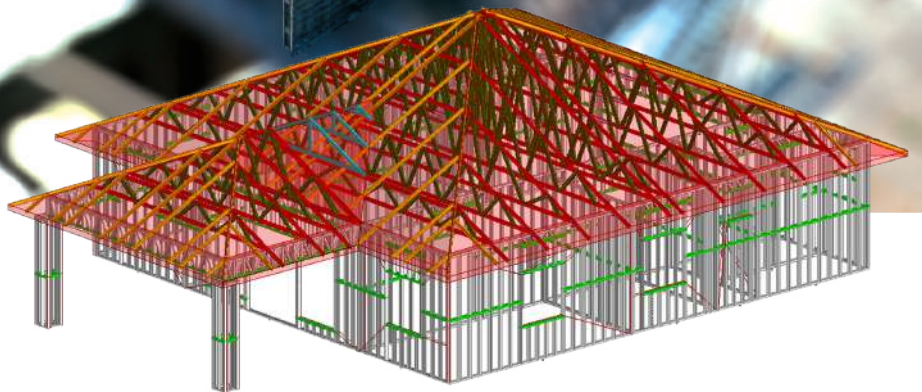
**FAST TO
CONSTRUCT**



**QUALITY
CONTROLLED**



**MINIMAL
DEBRIS**



IBS
INDUSTRIALISED
BUILDING SYSTEM



MS ISO 9001:2015 REG. No:AR 0954

www.ajiya.com

Introduction

AGiBS®, AJIYA Green Integrated Building System can be used to design, detail and manufacture steel frames for both residential and light commercial market. It is the next phase of eco-friendly construction evolution that promises accelerated project completion and higher productivity due to shortened construction time, reduced labour and wastages. The breakthrough complies with Industrialised Building System (IBS) endorsed by CIDB Malaysia.

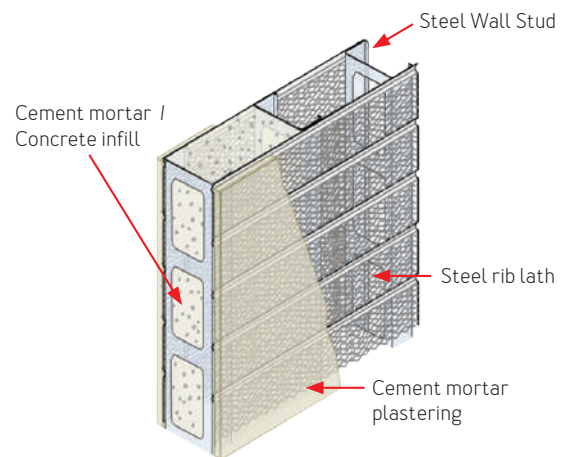
Advantages & Benefits

- Fast & Easy Installation
- Flexible Designs
- Pre-punched Services Openings
- Decreased Heavy Machinery Usage
- Welding Not Required
- Smoother & Even Wall Surface
- Equivalent Reinforce Concrete Wet Wall System
- Decreased Site Cleaning Costs Due To Debris And Waste Reduction
- Minimizes Crack Lines

AJIYA AGiBS® WALL STEEL FRAME SYSTEM SMART WALLING SYSTEM

AGiBS® is a lightweight wall steel framing system that is specifically designed with pre-punched holes and recesses dimples in the framing system to act as locators for easy assembly and flush finish, and multiple services holes for services to run without the needs to drill holes. Rib lath steel mesh (lost formwork) is easily attached to AGiBS®.

Typical Section of AGiBS® Wall



LEADING SOFTWARE FOR COLD FORMED STEEL (CFS) CONSTRUCTION

AGIBS® incorporates the leading software for Cold Formed Steel (CFS) technology for digital fabrication and the entire building can be built in a computer. For faster project delivery with fully integrated Wall Framing and Roof Trusses building design and detailing in one model.

Our system integrated with CAD / CAM link and utilizing BIM technology, maximizes productivity and accuracy by generating architectural and structural drawing sets, fabrication drawings, material reports, manufacturing data and architectural visualizations all from one building model.



COMPLIANCES & PERFORMANCE

THERMAL PERFORMANCE

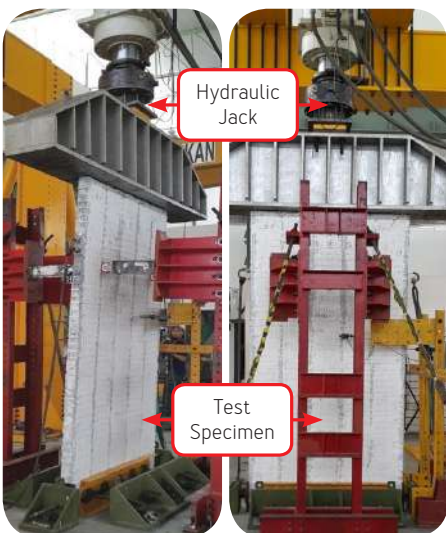
Building Material R-value			
#	Material	Thickness	R-value
1	Face Brick	4"	0.44 *
2	Concrete Masonry Unit	4"	0.80 *
3	Concrete Masonry Unit	8"	1.11
4	Concrete Masonry Unit	12"	1.28

R-value is the measurement of a material's capacity to **resist heat flow** from one side to the other. In simple terms, R-values measure the effectiveness of insulation and a higher number represents more effective insulation.

* AGIBS®

ACOUSTIC PERFORMANCE

Noise Source	R _w	Description	Application
Noise Source	25	Normal speech, hear easily	General application
	30	Loud speech, hear easily	
	35	Loud speech, can hear but not clear	
	42	Loud speech, can hear faintly	Residential / Dwelling Unit
	45	Loud speech, must strained to hear	
	48 *	Loud speech, can barely be heard	Hotel Room
	50	Loud speech, cannot be heard	Car Park
65	Very loud speech cannot be heard	Cinema Wall / Auditorium	
70	Extremely loud speech cannot be heard		



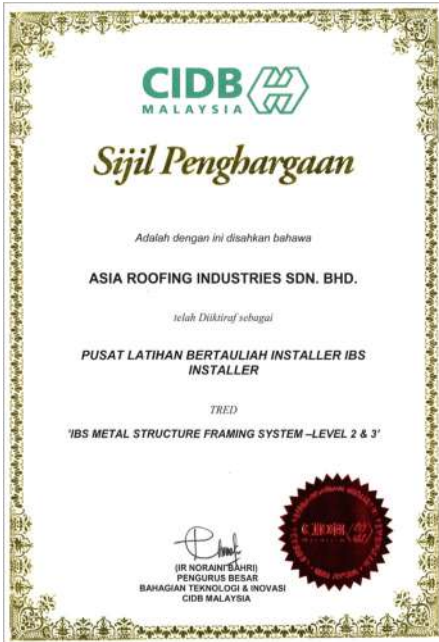
LOAD BEARING TEST



FIRE RESISTANCE TESTS (BS 476 Part 22:1987)



BOMBA HOSE STREAM TESTS



Corporate Head Office & Factory
 Lot 153, Kawasan Perindustrian
 Jalan Genuang, 85000 Segamat, Johor
 Tel : +607-943 4211
 Fax : +607-943 1054
 Email: enquiry@ajiya.com

Marketing HQ & Factory
 No. 4, Jalan Sg Pelubung 32/149
 Seksyen 32, 40460 Shah Alam, Selangor
 Tel : +603-5121 0011
 Fax : +603-5121 0111

Southern Marketing Office & Factory
 Lot 7068, Jalan Seelong, Kampung Maju Jaya,
 81300 Johor Bahru, Johor
 Tel : +607-557 3733 Fax : +607-556 5733

Mentakab Marketing Office & Factory
 No. 60, Jalan Industri Temerloh, Taman Perindustrian
 Temerloh, 28400 Mentakab, Pahang
 Tel : +609-270 1313 Fax : +609-270 1311

Kuantan Marketing Office & Factory
 PT 59860 Jalan Indera Mahkota 14/9, Bandar Indera
 Mahkota, 25200 Kuantan, Pahang
 Tel : +609-572 1816 Fax : +609-572 1887



Related Companies

ARI UTARA SDN BHD (273092-U)
 Lot 28, Taman Perindustrian
 Bukit Makmur,
 08000 Sungai Petani, Kedah
 Tel : +604-442 2899
 Fax : +604-442 2799

Subsidiary Companies

ARI TIMUR (KB) SDN BHD (714587-K)
 Lot 1306, Kawasan Perindustrian
 Pengkalan Chepa II
 16100 Kota Bharu, Kelantan
 Tel : +609-774 5946
 Fax : +609-774 6946

The information and illustration contained herein are for guidance only. Care has been taken to ensure all data and information herein is factual and numerical values are accurate at the time of publication. However, any or all technical specification, information and dimensions are nominal and provisional; they are subjected to change and variations in accordance with market conditions at the date of factual supply. No representation is made or to be implied as to the data and information herein; Asia Roofing Industries Sdn. Bhd. and its subsidiary and associate companies shall not be responsible for any errors in or misrepresentation of the information contained in this brochure or its use. Asia Roofing Industries Sdn. Bhd. and its subsidiary and associate companies reserve the right to alter any or all specifications as deemed fit and necessary without prior notice. Colours printed in this brochure are as close as normal printing process would allow and customers are advised to check and verify your chosen colour against an actual sample of the product before purchasing.

